

# PORTACOUNT® RESPIRATOR FIT TESTER MODEL 8048

RESPIRATOR FIT TESTING  
YOU CAN TRUST



The only commercially available instrument in the world that can quantitatively fit test all tight fitting respirator face masks, including all N95, P1 and P2 filtering face piece respirators!

Accept no substitutes . . . choose the original ambient aerosol condensation nuclei counter (CNC) quantitative fit testing instrument, the PortaCount® Respirator Fit Tester using N95-Companion™ technology.

## PortaCount® Model 8048 Includes

- + N95-Companion™ technology
- + Carrying case
- + AC adaptor
- + Alcohol supply (sixteen 30 ml bottles of 99.5% reagent grade isopropanol - enough for ~240 hours of operation)
- + FitPro™ Ultra Software
- + Particle Generator
- + Standard accessory kit (twin tubing, zero filters, spare wicks, alcohol fill capsule and cartridge, USB cable)
- + Filtering Facepiece fit testing kit (probe insertion tool, probes, lock nuts, lanyard)

## FitPro™ Ultra Software

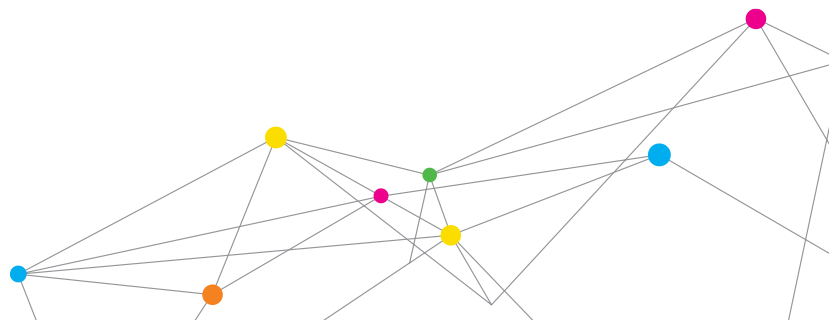
- + New FitPro™ Ultra fit test software improves efficiency and simplifies fit testing
- + New advanced user interface with intuitive design supporting one-step-to-a-fit test
- + Wireless WiFi® communication to leverage the utility of a laptop or tablet
- + Industry first active animations guide the test subject through the fit test exercises to ensure greater compliance
- + Interactive troubleshooting guide

## Features and Benefits

- + OSHA, CSA, HSE, and ANSI Compliant for ALL tight fitting respirators, including Series 95, 99, 100, FFP1, FFP2, and FFP3 filtering facepiece respirators
- + Measures fit factors greater than 10,000
- + Computes respirator fit factor using microscopic particles in ambient air
- + Automates fit testing with FitPro™ Ultra Software
- + Real-Time FitCheck® Mode to train new users and troubleshoot failed fit tests
- + Mask sampling adapter kits enable fit testing in employee's personal respirators
- + Software prints fit test cards with fit test report or on ID cards



UNDERSTANDING, ACCELERATED



# SPECIFICATIONS

## PORTACOUNT® RESPIRATOR FIT TESTER MODEL 8048

### Fit Factor Range

1 to greater than 10,000, 1 to 200 for N95 masks

### Respirator Facepieces that can be Fit Tested

Full-face elastomeric  
Half-face elastomeric  
NIOSH series-100 filtering-facepiece  
NIOSH series-99 filtering-facepiece  
NIOSH series-95 filtering-facepiece  
Series FFP1, FFP2, FFP3 respirators

### Fit Factor Measurement

Direct measurement of fit factor ( $C_{out}/C_{in}$ )\*

### Dimensions

4.83 in. x 10.5 in. x 9.46 in. (12 cm x 27 cm x 24 cm)

### Weight

Unit Only	7.0 lb. (3.2 kg)
With Standard	
Accessories and Case	15.35 lb. (6.9 kg)

### Power

Autosensing 100 to 250 VAC, 50 to 60 Hz

### Flow Rate

Sample	350 cm <sup>3</sup> /min
Total	1000 cm <sup>3</sup> /min (nominal)

### Temperature Range

Operation	32 to 100°F (0 to 38°C)
Storage	-40 to 122°F (-40 to 50°C)

### Working fluid

99.5% reagent grade isopropanol.

Run time per charge:	6 hr of fit testing operation at 70°F (21°C)
----------------------	---

### Carrying Case

Dimensions (HWD)	10.0 in. x 20.5 in. x 15.5 in. (25.4 cm x 52.1 cm x 39.4 cm)
------------------	---

### Pass/Fail Setting

User-selectable: 0 to 10,000

### Factory Recalibration Interval

One year

### Warranty

Two years on workmanship and materials.

### Communications

WiFi, USB-C, USB-A

### Minimum PC Hardware Requirements for FitPro™ Ultra Fit Test Software

Windows® 7 (32 and 64 bit), Windows 8 (32 and 64 bit), or  
Windows 10 (32 and 64 bit) operating system Microsoft.  
Net version 4 (installation software will install Microsoft.  
Net if necessary) **Note** – An internet connection is required  
to install Microsoft.Net.  
≥ 1 GHz process  
≥ 1280 x 800 screen resolution monitor  
500 MB free space on hard drive  
1 free USB port

### Minimum Tablet requirements

Windows® 10 operating system  
USB port (for initial set up)

### Software

FitPro™ Ultra Software featuring advanced user interface, animated  
graphics, and interactive troubleshooting guide.

### Optional Accessories

Mask Sampling Adapters for select respirator models.  
Microsoft® Surface Pro Tablet (4 GB RAM, 128 GB of storage).  
WiFi USB dongle.

\*Mask leakage is measured simultaneously while test subject  
moves and breathes.

Wi-Fi is a registered trademark of the Wi-Fi Alliance.

Windows and Microsoft are registered trademarks of Microsoft Corporation  
in the United States and/or other countries.

FitCheck, PortaCount, TSI and the TSI logo are registered trademarks of  
TSI Incorporated in the United States and may be protected under other  
country's trademark registrations.

To see our list of patents please visit:  
[www.tsi.com/patents](http://www.tsi.com/patents)



UNDERSTANDING, ACCELERATED

TSI Incorporated - Visit our website [www.tsi.com](http://www.tsi.com) for more information.

<b>USA</b>	<b>Tel:</b> +1 800 874 2811	<b>India</b>	<b>Tel:</b> +91 80 67877200
<b>UK</b>	<b>Tel:</b> +44 149 4 459200	<b>China</b>	<b>Tel:</b> +86 10 8219 7688
<b>France</b>	<b>Tel:</b> +33 1 41 19 21 99	<b>Singapore</b>	<b>Tel:</b> +65 6595 6388
<b>Germany</b>	<b>Tel:</b> +49 241 523030		