

PORTACOUNT® RESPIRATOR FIT TESTER MODEL 8040

RESPIRATOR FIT TESTING
YOU CAN TRUST

Quantitatively fit test all respirator face masks using $\geq 99\%$ efficient filter media.

Eliminate the guesswork.

Accept no substitutes . . . choose the original ambient aerosol condensation nuclei counter (CNC) quantitative fit testing instrument, the PortaCount® Respirator Fit Tester.



PortaCount Model 8040 Includes

- + Carrying case
- + AC power supply with global plug adaptors
- + Alcohol supply (sixteen 30 ml bottles of 99.5% reagent grade isopropanol - enough for ~240 hours of operation)
- + FitPro™ Ultra Software
- + Standard accessory kit (twin tubing, zero filters, spare wicks, alcohol fill capsule and cartridge, USB cable)

FitPro Ultra Software

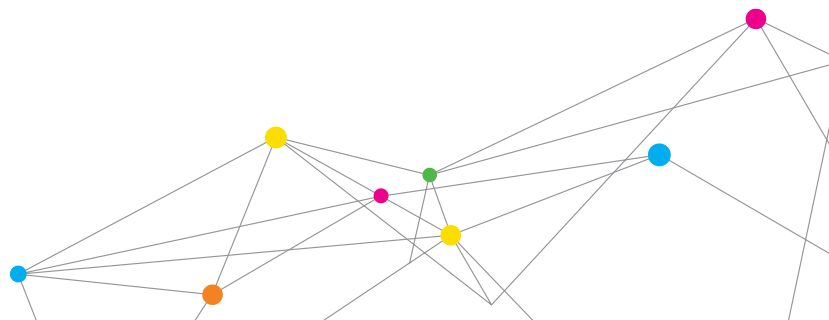
- + New FitPro Ultra fit test software improves efficiency and simplifies fit testing
- + New advanced user interface with intuitive design supporting one-step-to-a-fit test
- + Wireless WiFi communication to leverage the utility of a laptop or tablet
- + Industry first active animations guide the test subject through the fit test exercises to ensure greater compliance
- + Interactive troubleshooting guide

Features and Benefits

- + OSHA, CSA, HSE, and ANSI compliant for all respirators equipped with $\geq 99\%$ efficient filters.
- + Measures fit factors greater than 10,000
- + Computes respirator fit factor using microscopic particles in ambient air
- + Automates fit testing with FitPro Ultra Software
- + Real-Time FitCheck Mode™ to train new users and troubleshoot failed fit tests
- + Mask sampling adapter kits enable fit testing in employee's personal respirators
- + Software prints fit test cards with fit test report or on ID cards



UNDERSTANDING, ACCELERATED



SPECIFICATIONS

PORTACOUNT RESPIRATOR FIT TESTER MODEL 8040

Fit Factor Range

1 to greater than 10,000

Typical Fit Factor Accuracy

±10% of reading

Respirator Facepieces that can be Fit Tested

Full-face elastomeric
Half-face elastomeric
NIOSH series-100 filtering-facepiece
NIOSH series-99 filtering-facepiece
Series FFP3 disposable respirators

Fit Factor Measurement

Direct measurement of fit factor (C_{out}/C_{in})*

Dimensions

4.83 in. x 10.5 in. x 9.46 in. (12 cm x 27 cm x 24 cm)

Weight

Unit Only	6.1 lb. (2.7 kg)
With Standard Accessories and Case	14.45 lb. (6.5 kg)

Power

Autosensing 100 to 250 VAC, 50 to 60 Hz

Flow Rate

Sample	350 cm ³ /min
Total	1000 cm ³ /min (nominal)

Temperature Range

Operation	32 to 100° F (0 to 38° C)
Storage	-40 to 122° F (-40 to 50° C)

Working fluid

99.5% reagent grade isopropanol.
Run time per charge: 6 hr of fit testing operation at 70° F (21° C)

Carrying Case

Dimensions (HWD) 10.0 in. x 20.5 in. x 15.5 in.
(25.4 cm x 52.1 cm x 39.4 cm)

Pass/Fail Setting

User-selectable: 0 to 10,000

Factory Recalibration Interval

One year

Warranty

Two years on workmanship and materials

Communications

WiFi, USB-C, USB-A

Minimum PC Hardware Requirements for FitPro Ultra Fit Test Software

Windows® 7 (32 and 64 bit), Windows 8 (32 and 64 bit), or Windows 10 (32 and 64 bit) operating system
Microsoft.Net version 4 (installation software will install Microsoft.Net if necessary) **Note** – An internet connection is required to install Microsoft.Net
≥ 1 GHz process
≥ 1280 x 800 screen resolution monitor
500 MB free space on hard drive
1 free USB port

Minimum Tablet requirements

Windows 10 operating system
USB port (for initial set up)

Software

FitPro Ultra Software featuring advanced user interface, animated graphics, and interactive troubleshooting guide

Optional Accessories

Mask Sampling Adapters for select respirator models
Microsoft® Surface Pro Tablet (4 GB RAM, 128 GB of storage)
WiFi USB dongle

*Mask leakage is measured simultaneously while test subject moves and breathes.

FitCheck, FitPro and N95-Companion are trademarks, and PortaCount, TSI, and the TSI logo are registered trademarks of TSI Incorporated.

Microsoft and Windows are registered trademarks of Microsoft Corporation in the United States and/or other countries.

To see our list of patents please visit:
www.tsi.com/patents



UNDERSTANDING, ACCELERATED

TSI Incorporated - Visit our website www.tsi.com for more information.

USA	Tel: +1 800 874 2811	India	Tel: +91 80 67877200
UK	Tel: +44 149 4 459200	China	Tel: +86 10 8219 7688
France	Tel: +33 1 41 19 21 99	Singapore	Tel: +65 6595 6388
Germany	Tel: +49 241 523030		